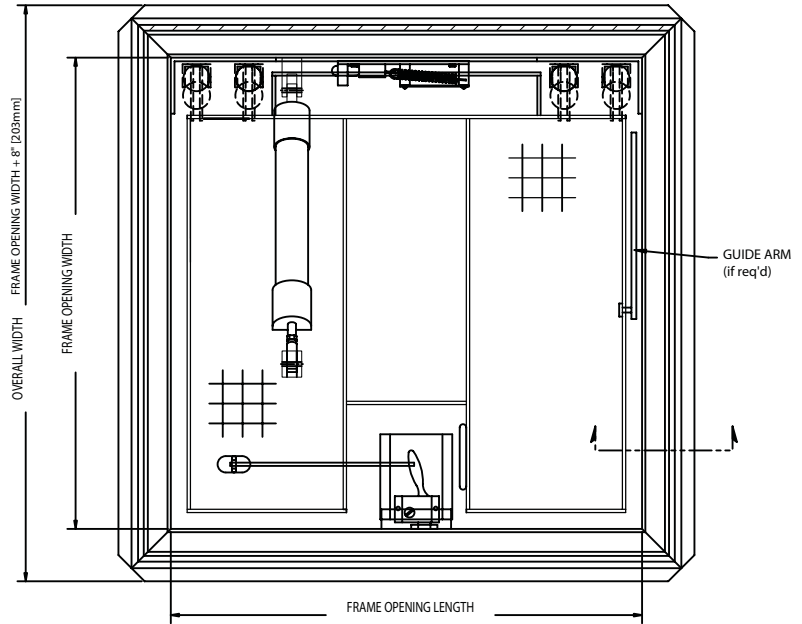


DETAIL & SUBMITTAL SHEET



FRONT ELEVATION



SPECIFICATIONS:

- Material:** Cover and frame are 1/4" aluminum
- Cover:** Aluminum plate reinforced for 150 psf (732 kg/m²) live load
- Frame:** Extruded aluminum frame with built in anchor flange around the perimeter
- Hinges:** Continuous heavy-duty Type 316 stainless steel hinge
- Latch:** Pneumatic self closing system that automatically closes the door in the event of a fire when heat parts a UL-listed 165 °F (74 °C) fusible link
- Lift Assistance:** Compression spring operators enclosed in telescopic tubes.

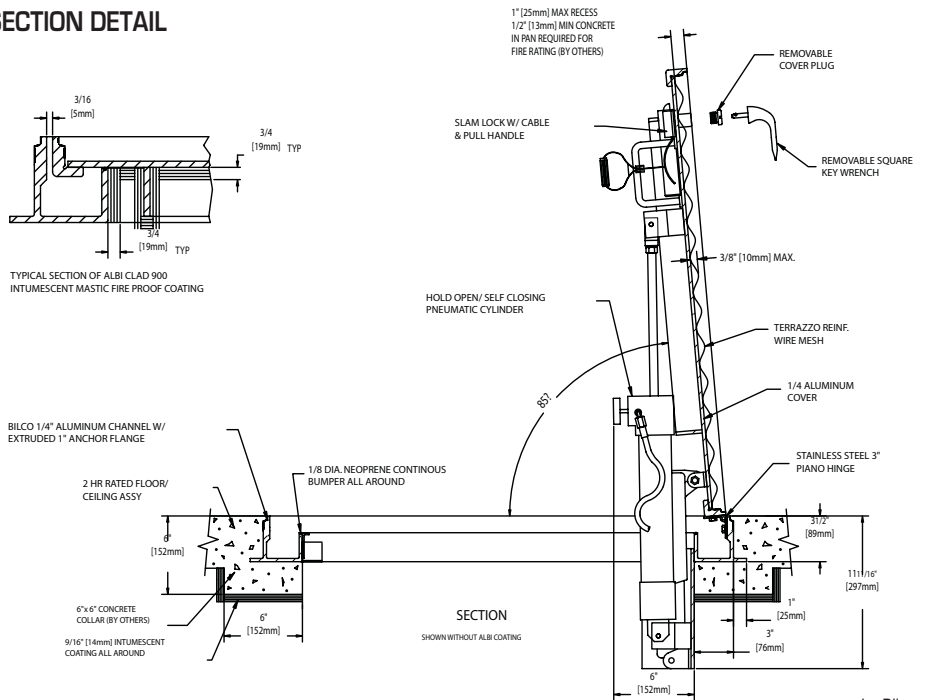
Performance Ratings: Tested in accordance with ASTM E119, NFPA 251, BS476: Part 22 and UL-listed (File R15197) as having a 2-hour fire rating when exposed to fire from the underside.

Compliance: Self-closing mechanism complies with ASTM E119, NFPA 80, NFPA 251 and BS476: Part 22

Finish: Mill finish aluminum with a bituminous coating applied to the exterior of the frame

Hardware: Engineered composite compression spring tubes. Steel compression springs with electrocoated acrylic finish. Type 316 stainless steel hinges. All other hardware is zinc plated/chromate sealed.

SECTION DETAIL



OPTIONS: (AT EXTRA COST)

- WB Safety Grab
- WB Safety Post
- Railing Ready
- Special sizes available upon request

✓	Item No.	Door Size W x H	Material	Ship Wt. Lbs.
	FR 2	30 x 30	Aluminum	271
	FR 3	36 x 30	Aluminum	277
	FR 4	36 x 36	Aluminum	326
	FR 5	42 x 42	Aluminum	368
	FR 6	30 x 48	Aluminum	328

FRLC available upon request if closing mechanism is not required by local fire authorities having jurisdiction

Project: _____ Date: _____

Contractor: _____ Architect: _____

Sizes: _____ Quantity: _____ Approval Initials: _____



Phone: 1-800-255-5515 • Fax: 1-800-822-5001

www.wbdoors.com