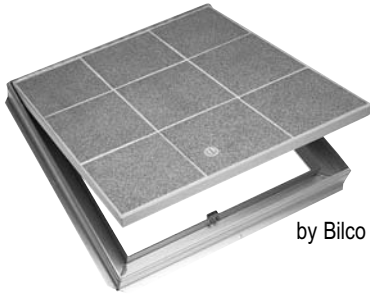
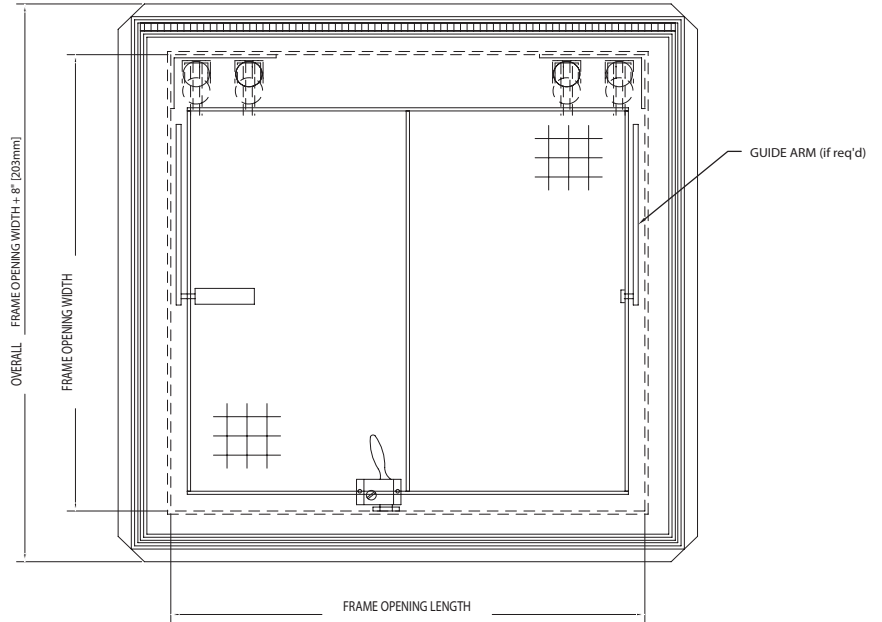


DETAIL & SUBMITTAL SHEET



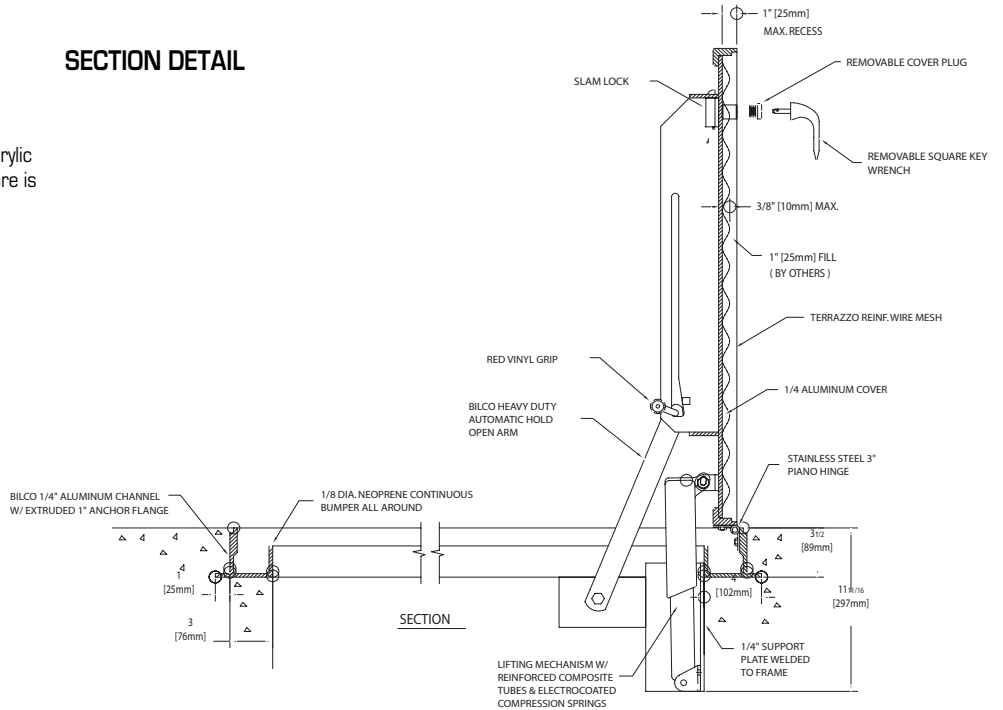
FRONT ELEVATION



SPECIFICATIONS:

Material: Cover and frame are 1/4" aluminum
Cover: Smooth plate reinforced for 150 psf (732 kg/m²) live load. Cover designed with 1" filmable pan for field installation of architectural flooring material (specify flooring material including type, thickness, and weight).
Frame: Extruded aluminum frame with built in anchor flange around the perimeter
Hinges: Continuous heavy-duty Type 316 stainless steel hinge
Latch: Type 316 stainless steel slam lock with fixed interior handle and removable exterior turn/lift handle. Latch release is protected by a flush, gasketed, removable screw plug.
Lift Assistance: Compression spring operators enclosed in telescopic tubes. Automatic hold-open arm with grip handle release
Finish: Mill finish aluminum with a bituminous coating applied to the exterior of the frame
Hardware: Engineered composite compression spring tubes. Steel compression springs with electrocoated acrylic finish. Type 316 stainless steel hinges. All other hardware is zinc plated/chromate sealed.

SECTION DETAIL



OPTIONS: (AT EXTRA COST)

- WB Safety Grab
- WB Safety Post
- Railing Ready
- Special sizes available upon request

Item No.	Door Size W x H	Material	Ship Wt. Lbs.
TER 1	24 x 24	Aluminum	100
TER 2	30 x 30	Aluminum	110
TER 3	36 x 30	Aluminum	120
TER 4	36 x 36	Aluminum	130

TRD available upon request (double leaf)

Project: _____ Date: _____

Contractor: _____ Architect: _____

Sizes: _____ Quantity: _____ Approval Initials: _____



Phone: 1-800-255-5515 • Fax: 1-800-822-5001

www.wbdoors.com