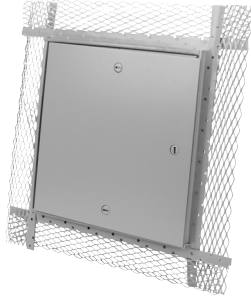
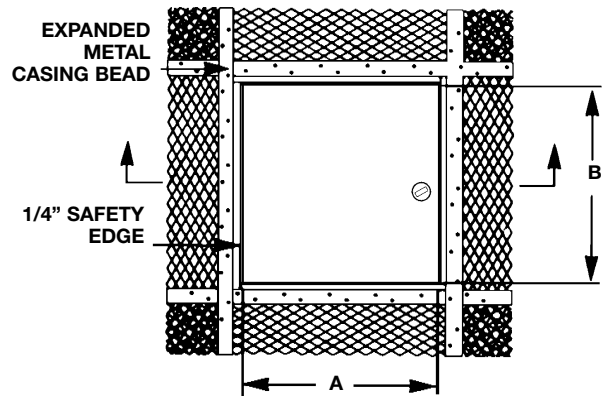


DETAIL & SUBMITTAL SHEET

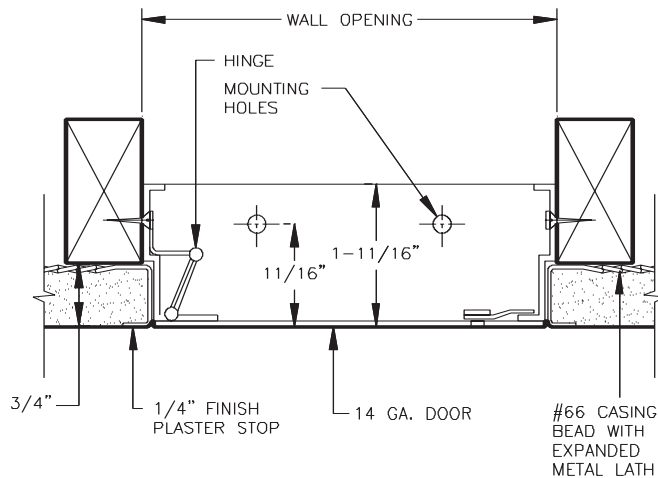
WALLS & CEILINGS



FRONT ELEVATION



SECTION DETAIL



SPECIFICATIONS:

Door: 14 ga. steel

Frame: 16 ga. steel. These models have a 3" wide expanded flange of 24 ga. galvanized material. The space from the expanded flange to the 1/4" safety edge of the door will accommodate 3/4" of plaster

Hinge: Fully-concealed piano hinge

Latches: Flush, stainless steel cam latch

Finish: Grey baked enamel coat

OPTIONS:

Finishes:

- Stainless Steel Type 304 No. 4 Satin Finish Brushed
- Stainless Steel Type 316 No. 4 Satin Finish Brushed

Options:

- WB 151 Key Code Cylinder locks-keyed alike with 2 keys per lock
- Weather resistive neoprene gasketing on 3 sides*
- Special sizes available

Item No.	Door Size W x H	Wall Opening	Cam Latch	Ship Wt. Lbs.
PL 500	8 x 8	8 1/4 x 8 1/4	1	4
PL 500	10 x 10	10 1/4 x 10 1/4	1	5
PL 500	12 x 12	12 1/4 x 12 1/4	1	7
PL 500	12 x 16	12 1/4 x 16 1/4	3	8
PL 500	12 x 18	12 1/4 x 18 1/4	3	8
PL 500	14 x 14	14 1/4 x 14 1/4	3	10
PL 500	16 x 16	16 1/4 x 16 1/4	3	12
PL 500	18 x 18	18 1/4 x 18 1/4	3	13
PL 500	20 x 24	20 1/4 x 24 1/4	4	17
PL 500	22 x 22	22 1/4 x 22 1/4	4	18
PL 500	24 x 24	24 1/4 x 24 1/4	4	20

Designed for all plaster walls and ceilings. The 1/4" safety edge gives the door a strong frame and prevents the plaster from being chipped under normal use.

* Closed cell sponge, blend of Neoprene/EPDM/SBR. Meets ASTM D-1056: SCE 41, RE 41, 2A1; substrate UL 94HF-1 recognized.

Project: _____ Date: _____

Contractor: _____ Architect: _____

Sizes: _____ Quantity: _____ Approval Initials: _____



Corporate Office: 1330 Progress Drive • Front Royal, VA 22630
 Phone: 1-800-255-5515 • Fax: 1-800-822-5001

www.wbdoors.com