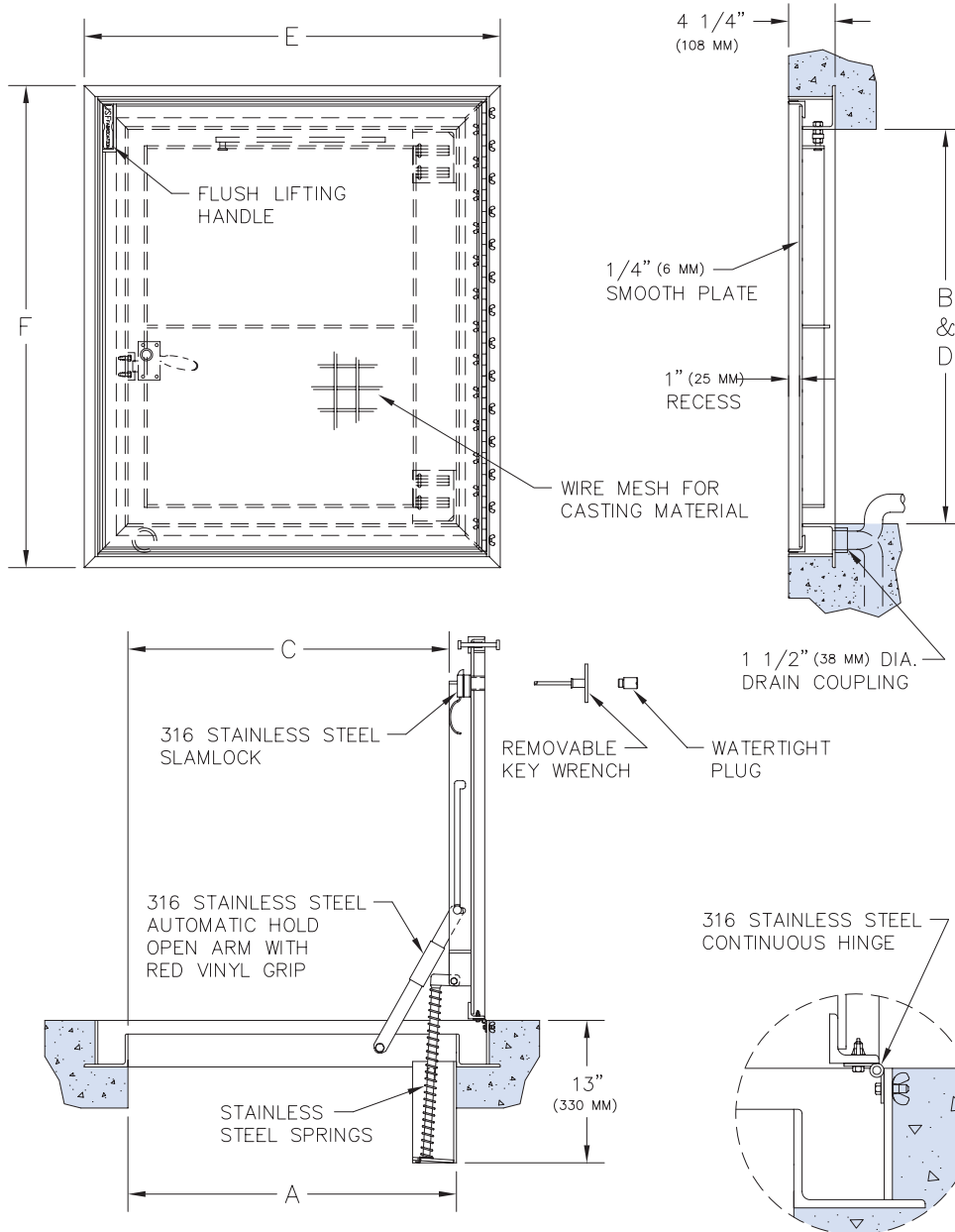




WB R-TPS 8400 Recessed Floor Hatch

FLOOR INSTALLATION



STORAGE:

Prior to installation floor access doors should be stored in a dry area that is free of dirt and debris. Floor access doors should be stored on the original shipping pallets.

HANDLING:

Standard practice precautions should be taken whenever handling or moving palletized floor access doors by forklift.

INSTALLATION:

For proper installation, Williams Brothers Corporation of America recommends the following:

1. Formwork must be flush to the inside of frame.
2. Secure unit to formwork using standard construction practices.
3. When pouring concrete, cover should be in the closed position.
4. Concrete to finish flush with top of unit framework.
5. Unit shall be left in framework for not less than 24 hours.
6. Clean all excess concrete from frame, cover seat; and in the case of a trough type frame, the drainage coupling.